

HS-150S Premium Accelerometer

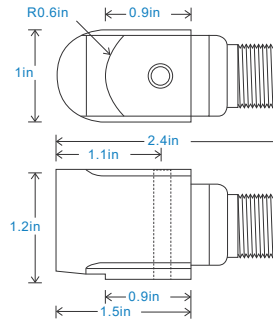
AC acceleration output via 2 Pin MS Connector

Key Features

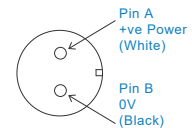
- For use with data collector and online systems
- Side entry for easy access
- Customizable features

Industries

Building services, Pulp and Paper, Mining, Metals, Utilities, Automotive, Water, Pharmaceutical



Connection Details



Technical Performance

Mounted Base Resonance	see: 'How To Order' table (nominal)
Sensitivity	see: 'How To Order' table $\pm 10\%$ Nominal 80Hz at 72°F
Frequency Response	90cpm (1.5Hz) to 600kcpm (10kHz) $\pm 5\%$ 30cpm (0.5Hz) to 720kcpm (12kHz) $\pm 10\%$ 12cpm (0.2Hz) to 900kcpm (15kHz) $\pm 3\text{dB}$
Isolation	Base isolated
Range	see: 'How To Order' table
Transverse Sensitivity	Less than 5%

Mechanical

Case Material	Stainless Steel
Sensing Element/Construction	PZT/Shear
Mounting Torque	5.9ft. lbs
Mounting Bolt provided	see: 'How To Order' table x 1.4in long
Weight	7.2 oz. (nominal) body only
Shielded Cable Assembly	see: www.hansfordsensors.com for options
Connector	HS-AA004 - non-booted HS-AA053 or HS-AA054 - booted
Mounting Threads	see: 'How To Order' table

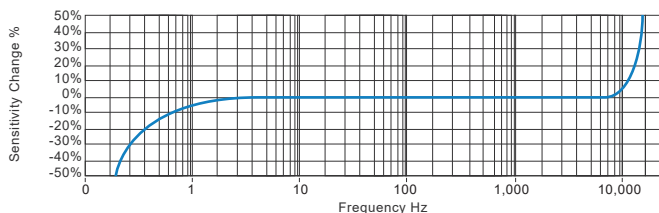
Electrical

Electrical Noise	0.1mg max
Current Range	0.5mA to 8mA
Bias Voltage	10 - 12 Volts DC
Settling Time	1 second
Output Impedance	200 Ohms max.
Case Isolation	$>10^8$ Ohms at 500 Volts

Environmental

Operating Temperature Range	-67 to 300°F
Sealing	IP68
Maximum Shock	5000g
EMC	EN61326-1:2013

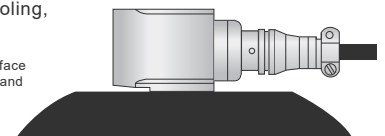
Typical Frequency Response (at 100mV/g)



Applications

Fans, Motors, Pumps, Compressors, Centrifuges, Conveyors, Air Handlers, Gearboxes, Rolls, Dryers, Presses, Cooling, VAC, Spindles, Machine Tooling, Process Equipment

Vibration sensor should be firmly fixed to a flat surface (spot face surface may be needed to be produced and cable anchored to sensor body.)



How To Order

Product Prefix	Product Series										
HS - Hansford Sensors	150 - Premium Industrial Vibration Sensor										
H	S	1	5	0	S	X	X	X	X	X	X
Extra Options (if required)		Sensitivity		Range		Resonant Frequency		Cable/Connector		Mounting Threads	
F	- Filtered	010	- 10mV/g	$\pm 800\text{g}$		1,620kcpm	(27kHz)	01 - PUR		02 - 1/4-28" UNF Male	
L	- 316L Stainless Steel	030	- 30mV/g	$\pm 250\text{g}$		1,500kcpm	(25kHz)	02 - Braided		06 - M6 x 1mm Male	
RT	- Temperature Output PT100	050	- 50mV/g	$\pm 160\text{g}$		1,380kcpm	(23kHz)	07 - Silicon		08 - M8 x 1.25mm Male	
S	- 90° Side Exit	100	- 100mV/g	$\pm 80\text{g}$		1,260kcpm	(21kHz)	08 - Flame Retardant			
T	- Temperature Output	250	- 250mV/g	$\pm 32\text{g}$		1,140kcpm	(19kHz)	50 - 2 Pin MS			
Y	- 5% tolerance on sensitivity	500	- 500mV/g	$\pm 16\text{g}$		1,020kcpm	(17kHz)	54 - M12			



www.hansfordsensors.com
sales@hansfordsensors.com

We reserve the right to alter the specification of this product without prior notice

TS216U.8

